

---

# Other Information

---

- P107 Daiwa Securities Group Inc. Corporate Data  
Stock Information
- P108 Organization and Officers
- P112 Domestic Group Companies
- P113 Overseas Group Companies

# Daiwa Securities Group Inc. Corporate Data

## Head Office

GranTokyo North Tower  
9-1, Marunouchi 1-chome, Chiyoda-ku,  
Tokyo 100-6751, Japan  
Tel: (81) 3-5555-1111

## Website

<http://www.daiwa-grp.jp/english/ir/>

## Commencement of Operations

May 1, 1902

## Date of Founding

December 27, 1943

## Common Stock

Issued and Outstanding  
1,749,378,772 shares  
(as of March 31, 2012)

## Number of Shareholders

132,312 (as of March 31, 2012)

## Independent Public Accountant

KPMG AZSA LLC

## Stock Exchange Listings

Tokyo, Osaka, Nagoya

## Transfer Agent and Registrar

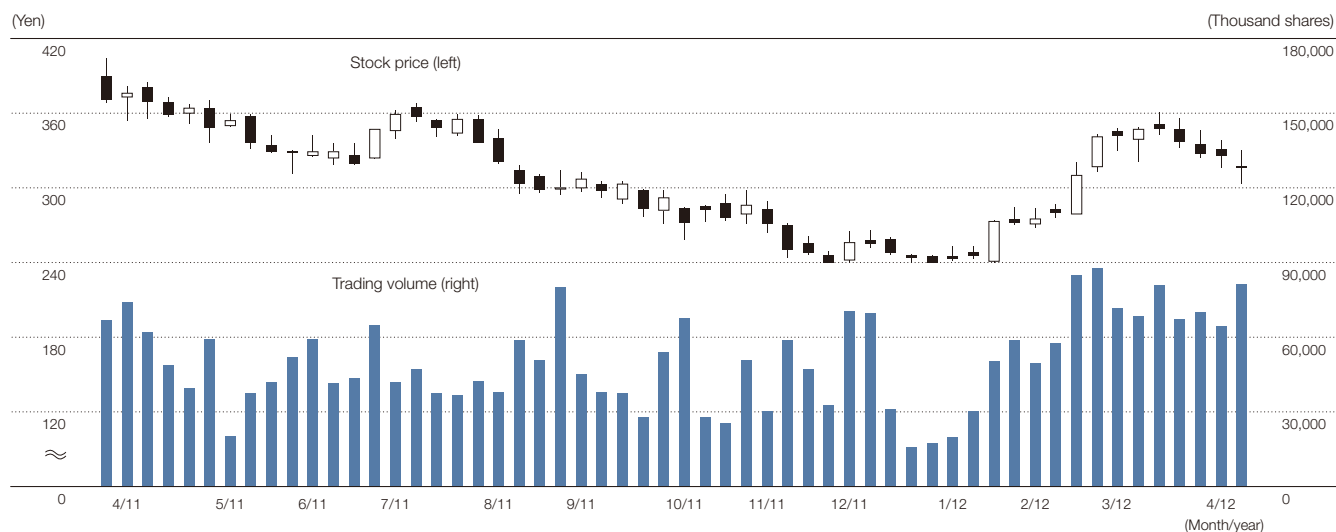
Sumitomo Mitsui Trust Bank, Limited  
Stock Transfer Agency Department  
1-4-1, Marunouchi, Chiyoda-ku,  
Tokyo 100-8233, Japan

## For further information, please contact: Daiwa Securities Group Inc. Investor Relations

Tel: (81) 3-5555-1300  
Fax: (81) 3-5555-0661  
Email: [ir-section@dsgj.daiwa.co.jp](mailto:ir-section@dsgj.daiwa.co.jp)  
URL: <http://www.daiwa-grp.jp/english/ir/>

## Stock Information

### 1. Stock Price and Trading Volume on the Tokyo Stock Exchange (April 1, 2011–March 31, 2012)



### 2. Major Shareholders (As of March 31, 2012)

Name	Number of shares held (Thousands)	% of total outstanding shares
STATE STREET BANK AND TRUST COMPANY 505223	124,357	7.25%
Japan Trustee Services Bank, Ltd. (Trust Account)	65,527	3.82%
The Master Trust Bank of Japan, Ltd. (Trust Account)	59,548	3.47%
SSBT OD05 OMNIBUS ACCOUNT-TREATY CLIENTS	44,154	2.57%
STATE STREET BANK AND TRUST COMPANY	42,382	2.47%
Sumitomo Mitsui Banking Corporation	30,328	1.76%
STATE STREET BANK AND TRUST COMPANY	26,812	1.56%
STATE STREET BANK AND TRUST CLIENT OMNIBUS ACCOUNT OM02	25,457	1.48%
Japan Trustee Services Bank, Ltd. Sumitomo Trust Pension Account	24,888	1.45%
The Master Trust Bank of Japan, Ltd. (ESOP Trust Account 75404)	23,681	1.38%

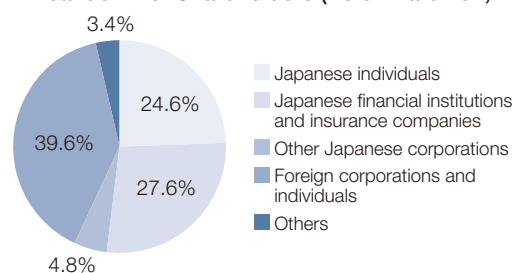
Notes: 1. Treasury stock of 35,770,328 shares is excluded for calculating the percentage of the above list of major shareholders.

2. The Company holds its own shares as treasury stock (35,770 thousand shares) as of March 31, 2012 and those shares are excluded from the above list of major shareholders.

### 3. Stock Price on the Tokyo Stock Exchange (April 1, 2011–March 31, 2012)

Open	High	Low	Close	Average daily trading volume
¥379	¥385	¥233	¥327	10,409 thousand shares

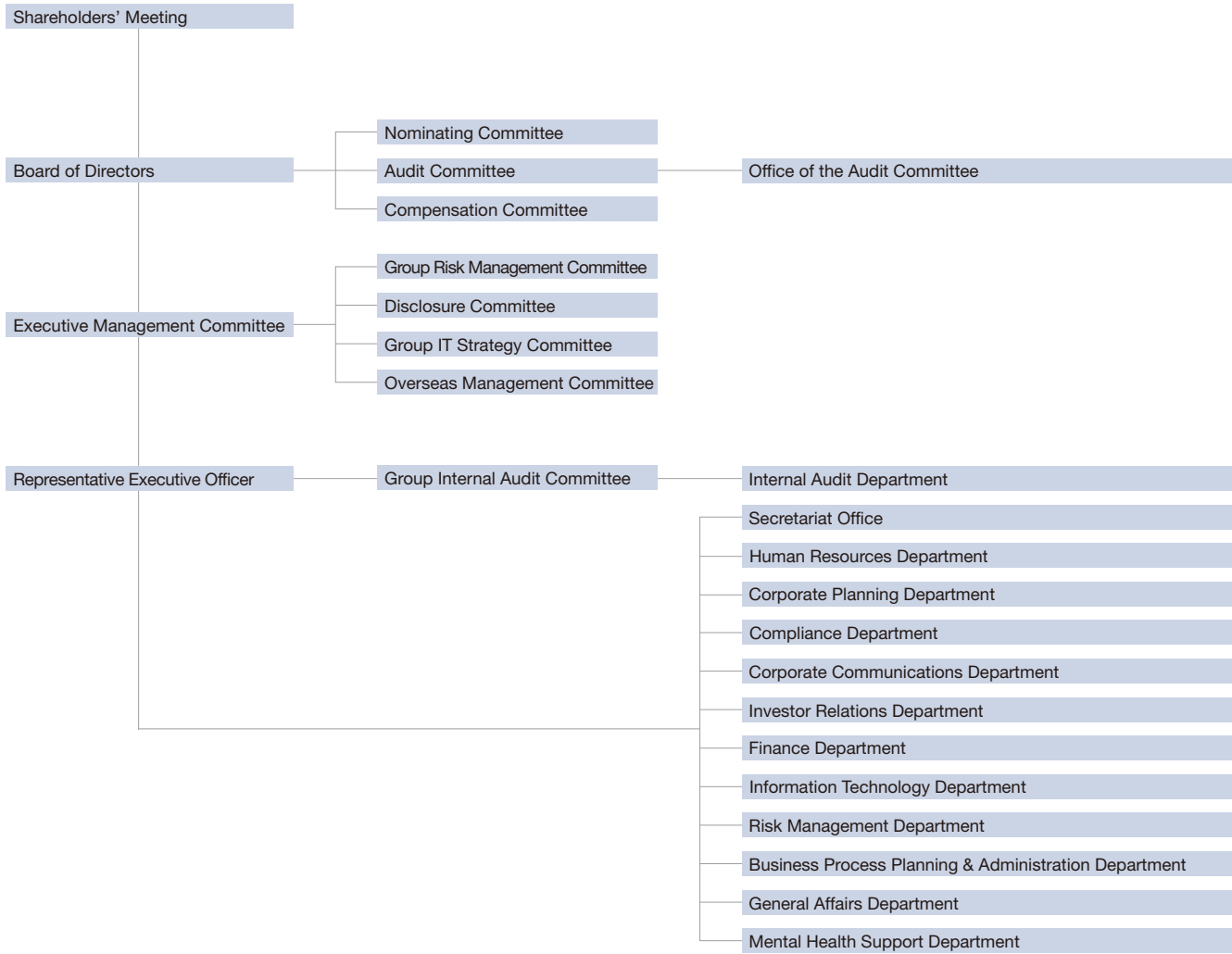
### 4. Breakdown of Shareholders (As of March 31, 2012)



# Organization and Officers

## Daiwa Securities Group Inc.

### 1) Organization (As of July 1, 2012)

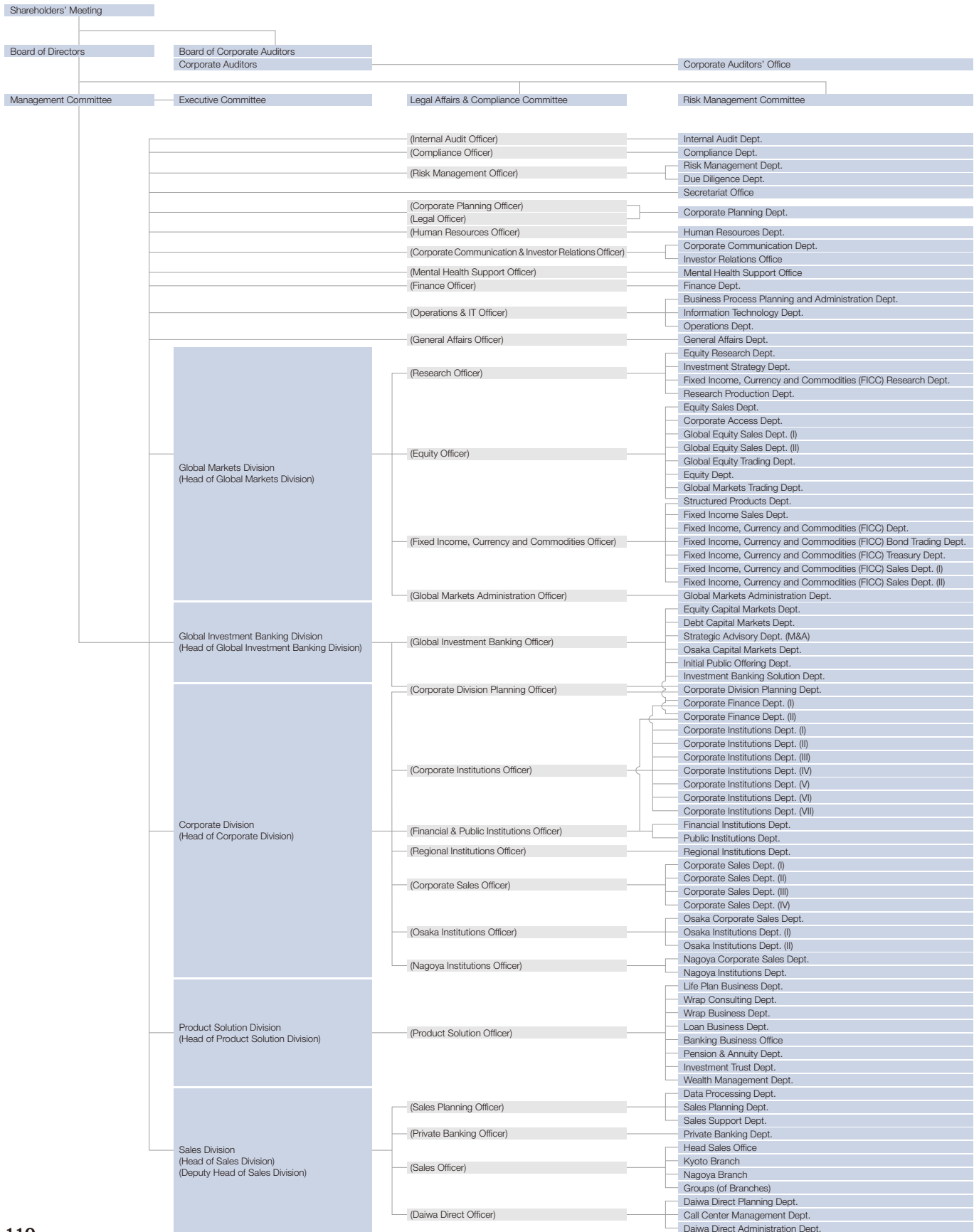


## 2) Officers (As of July 1, 2012)

Directors (Members of the Board)	Committee Members	Corporate Executive Officers	Executive Officers
Chairman of the Board Shigeharu Suzuki	Nominating Committee Shigeharu Suzuki (Chairman) Takashi Hibino	President and CEO Takashi Hibino	Senior Executive Managing Director Masami Tada
Director Takashi Hibino	Ryuji Yasuda Nobuko Matsubara Keiichi Tadaki	Deputy President, COO and CFO Nobuyuki Iwamoto	Senior Executive Managing Director Osamu Abiru
Director Nobuyuki Iwamoto	Kensuke Itoh	Deputy President Akio Takahashi	Senior Executive Managing Director Hiroshi Nakamura
Director Akio Takahashi	Audit Committee Koichi Uno (Chairman) Toshihiko Onishi Nobuko Matsubara Keiichi Tadaki	Deputy President Yoriyuki Kusaki	Executive Managing Director Masaaki Goto
Director Yoriyuki Kusaki	Compensation Committee Shigeharu Suzuki (Chairman) Takashi Hibino Ryuji Yasuda Koichi Uno Kensuke Itoh	Deputy President Makoto Shirakawa	Executive Managing Director Yoshio Urata
Director Takatoshi Wakabayashi		Deputy President Takashi Fukai	Senior Managing Director Wilfried Schmidt
Director Toshihiko Onishi		Senior Executive Managing Director and CRO Takatoshi Wakabayashi	Senior Managing Director Masahisa Nakagawa
Outside Director Ryuji Yasuda		Executive Managing Director Saburo Jifuku	Senior Managing Director Mikita Komatsu
Outside Director Koichi Uno		Executive Managing Director Koichi Matsushita	Senior Managing Director Hiroyuki Inose
Outside Director Nobuko Matsubara		Executive Managing Director Toshihiro Matsui	Senior Managing Director Hironori Oka
Outside Director Keiichi Tadaki		Executive Managing Director Noriaki Kusaka	
Outside Director Kensuke Itoh		Senior Managing Director Shigeharu Suzuki	

# Daiwa Securities Co. Ltd.

## 1) Organization (As of July 1, 2012)



## 2) Officers (As of July 1, 2012)

## Directors

(Members of the Board)

Chairman of the Board  
Shigeharu SuzukiPresident  
Takashi HibinoDeputy President  
Nobuyuki IwamotoDeputy President  
Akio TakahashiDeputy President  
Yoriyuki KusakiSenior Executive Managing  
Director  
Takatoshi WakabayashiRepresentative Senior Executive  
Managing Director  
Osamu AbiruSenior Executive Managing  
Director  
Hiroshi NakamuraSenior Executive Managing  
Director  
Seiji NakataSenior Executive Managing  
Director  
Shinya NishioExecutive Managing Director  
Eishu KosugeExecutive Managing Director  
Yoshimasa NagaseExecutive Managing Director  
Shinya KusabaExecutive Managing Director  
Kazuo TakahashiExecutive Managing Director  
Yosuke Sakai

## Corporate Auditors

Zenichiro Onishi

Kentaro Ito

Toshihiko Onishi

Hiroshi Obayashi

## Executive Officers

Executive Managing Directors  
Saburo Jifuku

Koichi Matsushita

Toshihiro Matsui

Yuichi Akai

Hiroyuki Kasahara

Junichi Aizawa

Koichi Maruo

Kazuo Hayasaki

Noriaki Kusaka

Senior Managing Directors  
Naoko Saito

Keiko Tashiro

Takeshi Niikura

Wilfried Schmidt

Tetsuya Kawaguchi

Shinji Kawakami

Masahisa Nakagawa

Mikita Komatsu

Tetsuo Akuzawa

Sumio Otsuka

Tadao Sakashima

Hiroyuki Inose

Kenji Imamura

Keisuke Natsume

Masahiro Kobayashi

Hiromi Uemura

Yoshinori Matsumoto

Sei Furuichi

## Domestic Group Companies

(As of July 1, 2012)

---

### Daiwa Securities Co. Ltd.

GranTokyo North Tower  
9-1, Marunouchi 1-chome, Chiyoda-ku, Tokyo 100-6752, Japan  
Tel: (81) 3-5555-2111

---

### Daiwa Asset Management Co. Ltd.

10-5, Nihonbashi-Kayabacho 2-chome, Chuo-ku, Tokyo 103-0025, Japan  
Tel: (81) 3-5695-2111

---

### Daiwa Institute of Research Holdings Ltd.

15-6, Fuyuki, Koto-ku, Tokyo 135-8460, Japan  
Tel: (81) 3-5620-5501

---

### Daiwa Institute of Research Ltd.

15-6, Fuyuki, Koto-ku, Tokyo 135-8460, Japan  
Tel: (81) 3-5620-5100

---

### Daiwa SB Investments Ltd.

2-1, Kasumigaseki 3-chome, Chiyoda-ku, Tokyo 100-0013, Japan  
Tel: (81) 3-6205-0200

---

### Daiwa Securities Business Center Co. Ltd.

3-2, Toyo 2-chome, Koto-ku, Tokyo 135-0016, Japan  
Tel: (81) 3-5633-6100

---

### Daiwa Property Co., Ltd.

2-1, Kyobashi 1-chome, Chuo-ku, Tokyo 104-0031, Japan  
Tel: (81) 3-5555-4700

---

### Daiwa Corporate Investment Co., Ltd

GranTokyo North Tower  
9-1, Marunouchi 1-chome, Chiyoda-ku, Tokyo 100-6756, Japan  
Tel: (81) 3-5555-6300

---

### Daiwa Institute of Research Business Innovation Ltd.

1-14-5 Eitai, Koto-ku, Tokyo 135-0034, Japan  
Tel: (81) 3-5931-8600

---

### Daiwa Next Bank, Ltd.

GranTokyo North Tower  
9-1, Marunouchi 1-chome, Chiyoda-ku, Tokyo 100-6756, Japan  
Tel: (81) 3-5555-6500

---

### Daiwa PI Partners Co. Ltd.

GranTokyo North Tower  
9-1, Marunouchi 1-chome, Chiyoda-ku, Tokyo 100-6730, Japan  
Tel: (81) 3-5555-6001

---

### Daiwa Securities SMBC Principal Investments Co. Ltd.

GranTokyo North Tower  
9-1, Marunouchi 1-chome, Chiyoda-ku, Tokyo 100-6754, Japan  
Tel: (81) 3-5555-6111

---

### Daiwa Fund Consulting Co. Ltd.

GranTokyo North Tower  
9-1, Marunouchi 1-chome, Chiyoda-ku, Tokyo 100-6756, Japan  
Tel: (81) 3-5555-6550

---

### Daiwa Real Estate Asset Management Co. Ltd.

2-1, Ginza 6-chome, Chuo-ku, Tokyo 104-0061, Japan  
Tel: (81) 3-6215-9500

---

### Daiwa Pension Consulting Co., Ltd.

3-2, Toyo 2-chome, Koto-ku, Tokyo 135-0016, Japan  
Tel: (81) 3-3615-7771

---

### Daiwa Investor Relations Co. Ltd.

2-1, Kyobashi 1-chome, Chuo-ku, Tokyo 104-0031, Japan  
Tel: (81) 3-5555-4111

---

### Daiwa Securities Media Networks Co. Ltd.

GranTokyo North Tower  
9-1, Marunouchi 1-chome, Chiyoda-ku, Tokyo 100-6751, Japan  
Tel: (81) 3-5555-1175

---

### Daiwa Office Management Co., Ltd.

GranTokyo North Tower  
9-1, Marunouchi 1-chome, Chiyoda-ku, Tokyo 100-6756, Japan  
Tel: (81) 3-5555-1400

---

### Daiwa Sanko Co., Ltd.

5-9, Sotokanda 2-chome, Chiyoda-ku, Tokyo 101-0021, Japan  
Tel: (81) 3-5256-4111

---

### HINODE SECURITIES CO., LTD.

2-14, Awajicho 2-chome, Chuo-ku, Osaka-shi, Osaka 541-0047, Japan  
Tel: (81) 6-6205-7711

# Overseas Group Companies

(As of July 1, 2012)

## Daiwa Securities Group Inc.

### Daiwa Securities Trust and Banking (Europe) PLC

5 King William Street, London EC4N 7JB, United Kingdom  
Tel: (44) 20-7320-8000

### Daiwa Securities Trust Company

One Evertrust Plaza, Jersey City, NJ 07302, U.S.A.  
Tel: (1) 201-333-7300

### Daiwa Securities Trust Europe Limited

Block 5, Harcourt Centre, Harcourt Road, Dublin 2, Ireland  
Tel: (353) 1-603-9900

### Daiwa Europe Fund Managers (Ireland) Ltd.

Block 5, Harcourt Centre, Harcourt Road, Dublin 2, Ireland  
Tel: (353) 1-603-9900

### Daiwa Europe Trustees (Ireland) Ltd.

Block 5, Harcourt Centre, Harcourt Road, Dublin 2, Ireland  
Tel: (353) 1-603-9900

### Daiwa Capital Markets America Inc.

New York Head Office  
Financial Square, 32 Old Slip, New York, NY10005, U.S.A.  
Tel: (1) 212-612-7000

#### San Francisco Branch

555 California Street, Suite 3360, San Francisco, CA 94104, U.S.A.  
Tel: (1) 415-955-8100

### Daiwa Capital Markets Europe Limited

London Head Office  
5 King William Street, London EC4N 7AX, United Kingdom  
Tel: (44) 20-7597-8000

#### Frankfurt Branch

Tranon Bldg., Mainzer Landstrasse 16, 60325 Frankfurt am Main,  
Federal Republic of Germany  
Tel: (49) 69-717080

#### Paris Representative Office

36, rue de Naples, 75008 Paris, France  
Tel: (33) 1-56 26 22 00

#### Geneva Branch

50, rue du Rhône, P.O. Box 3198, 1211 Geneva 3, Switzerland  
Tel: (41) 22-818 74 00

#### Bahrain Branch

Bahrain World Trade Centre, South Tower,  
P.O. Box 30069, Manama, Kingdom of Bahrain  
Tel: (973) 1753-4452

#### Moscow Representative Office

Midland Plaza, 10, Arbat Street,  
Moscow 119002, Russian Federation  
Tel: (7) 495-641-3416

### Daiwa Capital Markets Hong Kong Limited

One Pacific Place, 88 Queensway, Hong Kong  
Tel: (852) 2525-0121

### Daiwa Capital Markets Singapore Limited

6 Shenton Way #26-08, DBS Building Tower Two, Singapore 068809,  
Republic of Singapore  
Tel: (65) 6220-3666

### Daiwa Capital Markets Australia Limited

Rialto North Tower, 525 Collins Street, Melbourne, Victoria 3000, Australia  
Tel: (61) 3-9916-1300

### Daiwa Capital Markets India Private Limited

3, North Avenue, Maker Maxity, Bandra-Kurla Complex,  
Bandra East, Mumbai-400051, India  
Tel: (91) 22-6622-1000

### DBP-Daiwa Capital Markets Philippines, Inc.

Citibank Tower, 8741 Paseo de Roxas, Salcedo Village, Makati City,  
Republic of the Philippines  
Tel: (632) 813-7344

### Daiwa-Cathay Capital Markets Co., Ltd.

200, Keelung Road, Sec. 1, Taipei, Taiwan, R.O.C.  
Tel: (886) 2-2723-9698

### Daiwa Securities Capital Markets Korea Co., Ltd.

One IFC, 10 Gukjegeumyung-Ro, Yeouido-Dong, Yeongdeungpo-Gu,  
Seoul, Korea  
Tel: (82) 2-787-9100

## Daiwa Securities Co. Ltd.

### Beijing Representative Office

SK Tower, No. 6 Jia Jianguomen Wai Avenue, Chaoyang District,  
Beijing 100022 P.R.C.  
Tel: (86) 10-6500-6688

### Bangkok Representative Office

M.Thai Tower, All Seasons Place, 87 Wireless Road, Lumpini, Pathumwan,  
Bangkok 10330, Thailand  
Tel: (66) 2-252-5650

### Hanoi Representative Office

Pacific Place Building, 83B Ly Thuong Kiet Street, Hoan Kiem District,  
Hanoi, Vietnam  
Tel: (84) 4-3-946-0460

### Daiwa SSC Securities Co., Ltd.

Hang Seng Bank Tower, 1000 Lujiazui Ring Road,  
Pudong Shanghai 200120 P.R.C.  
Tel: (86) 21-3858-2000