

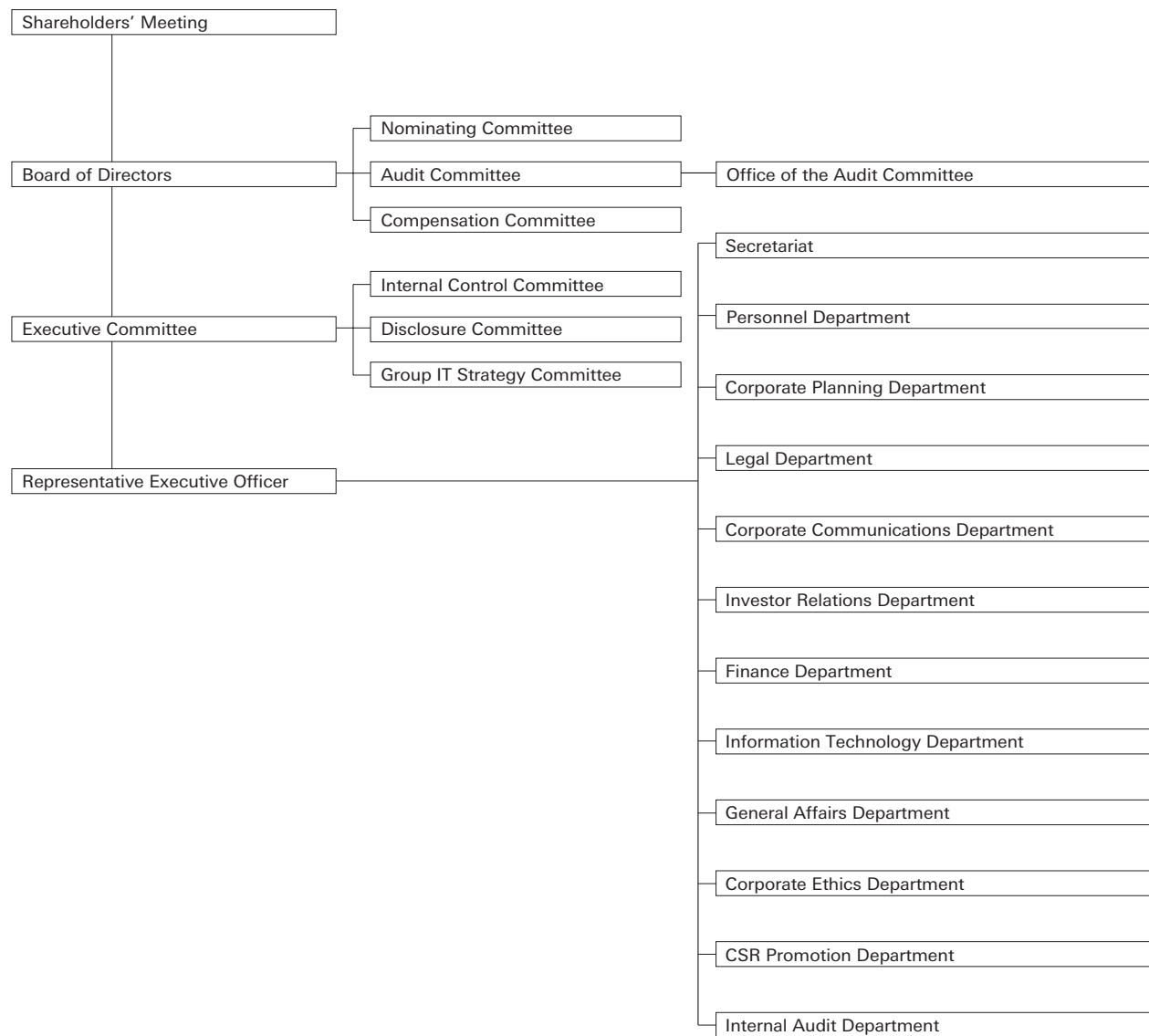


Other Information

- 078 Organization and Officers
- 084 Main Group Companies
- 085 Overseas Network
- 086 Stock Information

Other Information: Daiwa Securities Group Inc.

1) Organization (As of April 1, 2005)



2) Officers (As of June 24, 2005)

Directors

Chairman of the Board
Yoshinari Hara

Deputy Chairman of the Board
Akira Kiyota

Director
Shigeharu Suzuki

Director
Tatsuei Saito

Director
Tetsuo Mae

Director
Hiroshi Ota

Director
Junichiro Wakimizu

Director
Takashi Hibino

Director
Kenji Hayashibe

Outside Director
Tetsuro Kawakami

Outside Director
Ryuji Yasuda

Outside Director
Keisuke Kitajima

Outside Director
Koichi Uno

Committee Members

Nominating Committee
Yoshinari Hara (Chairman)
Shigeharu Suzuki
Tetsuro Kawakami
Ryuji Yasuda
Keisuke Kitajima

Audit Committee
Kenji Hayashibe (Chairman)
Keisuke Kitajima
Koichi Uno

Compensation Committee
Yoshinari Hara (Chairman)
Shigeharu Suzuki
Tetsuro Kawakami
Ryuji Yasuda
Koichi Uno

Executive Officers

President and CEO
Shigeharu Suzuki
Director, Daiwa Securities Group Inc.
President, Daiwa Securities Co. Ltd.

Deputy President and COO
Tatsuei Saito
Director, Daiwa Securities Group Inc.
President, Daiwa Securities SMBC Co. Ltd.

Deputy President
Tetsuo Mae
Director, Daiwa Securities Group Inc.
Deputy President, Daiwa Securities Co. Ltd.

Deputy President
Kenjiro Noda
Deputy President, Daiwa Securities SMBC Co. Ltd.

Deputy President
Michihito Higuchi
President, Daiwa Asset Management Co. Ltd.

Deputy President
Yoshiyuki Takemoto
President, Daiwa Institute of Research Ltd.

Corporate Executive Vice President
Hiroshi Ota
Senior Managing Director, Daiwa Securities SMBC Co. Ltd.

Corporate Executive Vice President and CIO
Junichiro Wakimizu
Director, Daiwa Securities Group Inc.

Corporate Senior Executive Officer
Takashi Hibino
Director, Daiwa Securities Group Inc.

Corporate Senior Executive Officer
Ikuo Mori
Chairman of the Board, Daiwa Securities America Inc.

Corporate Executive Officer
Takatoshi Wakabayashi

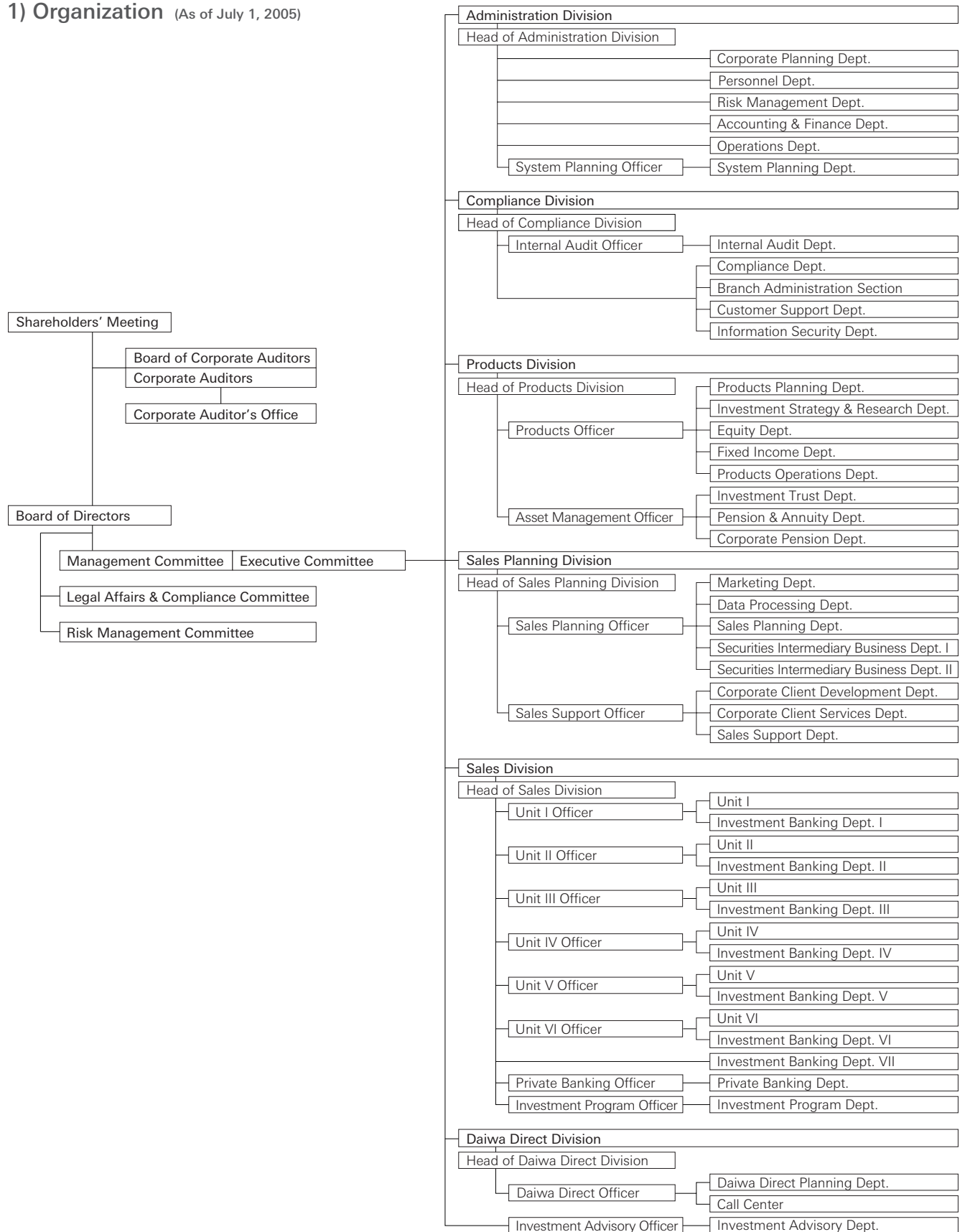
Corporate Executive Officer and CFO
Nobuyuki Iwamoto

Corporate Executive Officer
Yoshinari Hara
Chairman of the Board, Daiwa Securities Group Inc.

Corporate Executive Officer
Akira Kiyota
Deputy Chairman of the Board, Daiwa Securities Group Inc.
Chairman of the Institute and Director,
Daiwa Institute of Research Ltd.

Other Information: Daiwa Securities Co. Ltd.

1) Organization (As of July 1, 2005)



2) Officers (As of June 23, 2005)

Directors

President

Shigeharu Suzuki

Deputy President

Tetsuo Mae

Senior Managing Director

Akira Sakiyama

Senior Managing Director

Toshiro Ishibashi

Senior Managing Director

Kazuo Ariake

Managing Director

Tokuzo Takaki

Managing Director

Takashi Fukai

Managing Director

Tomiki Koide

Managing Director

Masaki Shimazu

Corporate Auditors

Syohei Takashima

Kenji Hayashibe

Kiyoaki Nakajima

Executive Officers

Makoto Shirakawa

Koushiro Taniguchi

Toshiaki Kuwano

Takuya Ikeda

Kouichi Suzuki

Osamu Abiru

Hisashi Otsuka

Hiroshi Nakamura

Yoshihiko Nakata

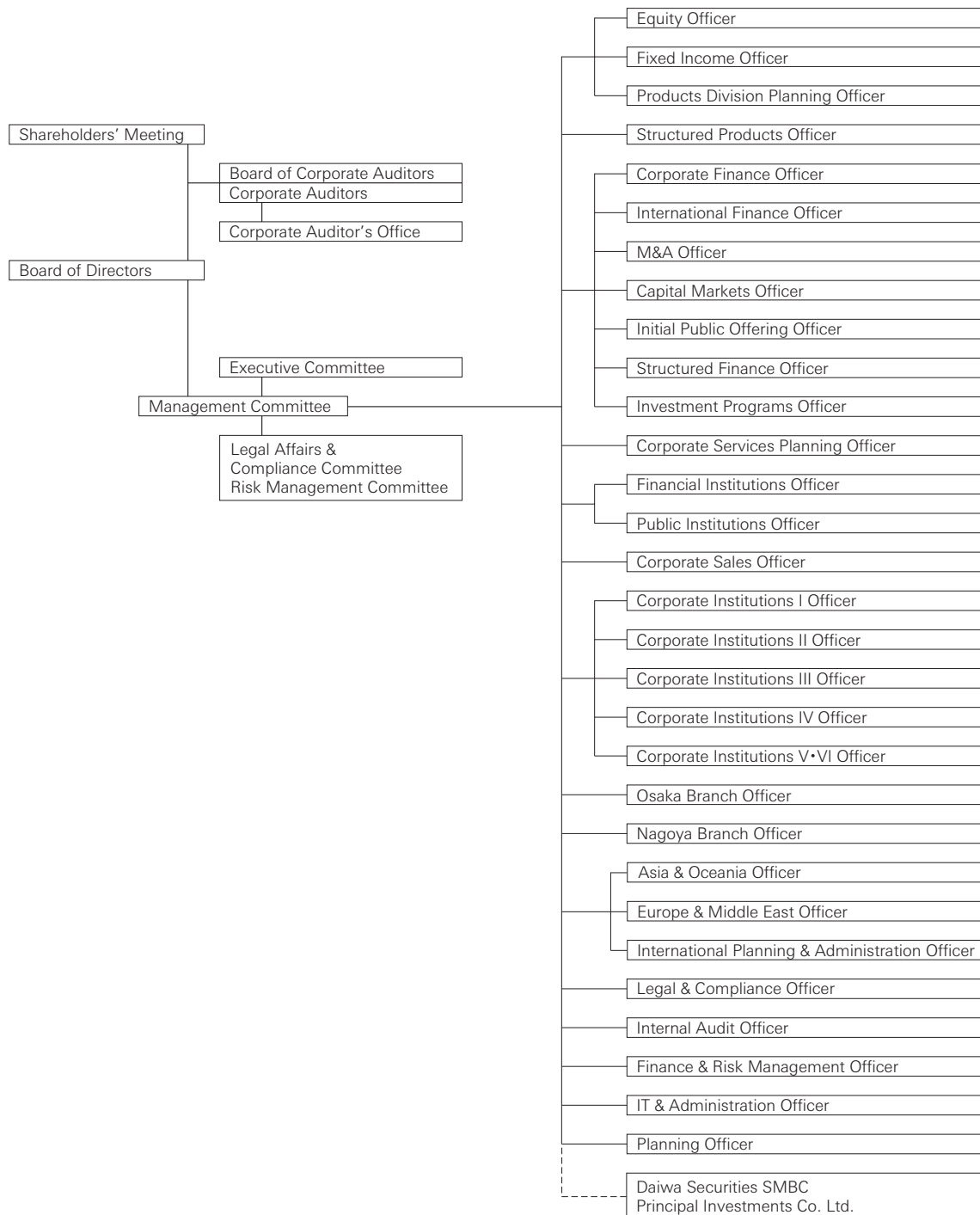
Yasuharu Okanoya

Masahiko Ichiki

Shinya Kusaba

Other Information: Daiwa Securities SMBC Co. Ltd.

1) Organization (As of August 1, 2005)



2) Officers (As of June 23, 2005)

Directors

President

Tatsuei Saito

Deputy President

Kenjiro Noda

Senior Managing Director

Hiroshi Ota

Senior Managing Director

Nobuaki Ohmura

Senior Managing Director

Taro Sumitani

Managing Director

Hiroshi Fujioka

Managing Director

Sumio Fukushima

Managing Director

Shin Yoshidome

Managing Director

Daisuke Saji

Managing Director

Kazuhiko Akamatsu

Corporate Auditors

Kishiro Fujino

Shigeharu Tominaga

Yoshiaki Senoo

Fuminori Yoshitake

Executive Officers

Senior Executive Officer

Hideo Watanabe

President, Daiwa Securities SMBC
Principal Investments Co. Ltd.

Senior Executive Officer

Akira Tanabe

Senior Executive Officer

Kazuhiko Suruta

Senior Executive Officer

Teruaki Ueda

Executive Officer

Yutaka Murakami

Mitsuharu Tanaka

Masaki Yamane

Masami Tada

Akio Takahashi

Shunichi Suzuki

Yoriyuki Kusaki

Tsing-Yuan Hwang

Shigeo Koike

Kenichi Miki

Motoi Takahashi

Eishu Kosuge

Shinya Nishio

Toshinao Matsushima

Other Information: **Main Group Companies** (As of July 1, 2005)

Daiwa Securities Co. Ltd.

6-4, Otemachi 2-chome, Chiyoda-ku, Tokyo 100-8101, Japan

Tel: 81-3-3243-2111

Daiwa Securities SMBC Co. Ltd.

8-1, Marunouchi 1-chome, Chiyoda-ku, Tokyo 100-8289, Japan

Tel: 81-3-5533-8000

Daiwa Asset Management Co. Ltd.

10-5, Nihonbashi-kayabacho 2-chome, Chuo-ku, Tokyo 103-0025, Japan

Tel: 81-3-5695-2111

Daiwa Institute of Research Ltd.

15-6, Fuyuki, Koto-ku, Tokyo 135-8460, Japan

Tel: 81-3-5620-5100

Daiwa SB Investments Ltd.

7-9, Nihonbashi 2-chome, Chuo-ku, Tokyo 103-0027, Japan

Tel: 81-3-3243-2915

Daiwa Securities Business Center Co., Ltd.

3-2, Toyo 2-chome, Koto-ku, Tokyo 135-0016, Japan

Tel: 81-3-5633-6100

Daiwa Property Co., Ltd.

1-9, Nihonbashi-kayabacho 1-chome, Chuo-ku, Tokyo 103-8219, Japan

Tel: 81-3-3665-5601

NIF Ventures Co., Ltd.

2-1, Kyobashi 1-chome, Chuo-ku, Tokyo 104-0031, Japan

Tel: 81-3-5201-1515

Daiwa Securities SMBC Principal Investments Co. Ltd.

8-1, Marunouchi 1-chome, Chiyoda-ku, Tokyo 100-8289, Japan

Tel: 81-3-5533-6058

Other Information: **Overseas Network** (As of May 13, 2005)

Daiwa Securities Group Inc.

Daiwa Securities America Inc.

Financial Square, 32 Old Slip, New York, NY 10005, U.S.A.
Tel: (1) 212-612-7000

Daiwa Securities Trust and Banking (Europe) PLC

5 King William Street, London EC4N 7JB, United Kingdom
Tel: (44) 20-7320-8000

Daiwa Securities Trust Company

One Evertrust Plaza, Jersey City, NJ 07302, U.S.A.
Tel: (1) 201-333-7300

Daiwa Europe Fund Managers (Ireland) Limited

Level 3, Block 5, Harcourt Centre,
Harcourt Road, Dublin 2, Ireland
Tel: (353) 1-603-9900

Daiwa Europe Trustees (Ireland) Limited

Level 3, Block 5, Harcourt Centre,
Harcourt Road, Dublin 2, Ireland
Tel: (353) 1-603-9900

Daiwa Securities SMBC Co. Ltd.

Daiwa Securities SMBC Europe Limited

Head Office

5 King William Street, London EC4N 7AX, United Kingdom
Tel: (44) 20-7597-8000

Frankfurt Branch

Trianon Bldg., Mainzer Landstrasse 16,
60325 Frankfurt am Main, Federal Republic of Germany
Tel: (49) 69-717080

Paris Branch

112, Avenue Kléber, 75116 Paris, France
Tel: (33) 1-56-26-22-00

Geneva Branch

50, rue du Rhône, P.O.Box 3198, 1211 Geneva 3, Switzerland
Tel: (41) 22-818-74-00

Milan Branch

Via Senato 14/16, 20121 Milan, Italy
Tel: (39) 02-763271

Spain Branch

Jose Ortega y Gasset 20, 7th floor, Madrid 28006, Spain
Tel: (34) 91-529-9800

Middle East Branch

7th Floor, The Tower, Bahrain Commercial Complex,
P.O. Box 30069, Manama, Bahrain
Tel: (973) 1753-4452

Daiwa Securities SMBC Hong Kong Limited

Level 26, One Pacific Place, 88 Queensway, Hong Kong
Tel: (852) 2525-0121

Daiwa Securities SMBC Singapore Limited

6 Shenton Way #26-08, DBS Building Tower Two,
Singapore 068809, Republic of Singapore
Tel: (65) 6220-3666

Daiwa Securities SMBC Australia Limited

Level 34, Rialto North Tower, 525 Collins Street,
Melbourne, Victoria 3000, Australia
Tel: (61) 3-9916-1300

DBP-Daiwa Securities SMBC Philippines, Inc.

18th Floor, Citibank Tower, 8741 Paseo de Roxas,
Salcedo Village, Makati City, Republic of the Philippines
Tel: (632) 813-7344

Daiwa Securities SMBC-Cathay Co., Ltd.

14th Floor, 200 Keelung Road, Sec. 1, Taipei, Taiwan, R.O.C.
Tel: (886) 2-2723-9698

Daiwa SMBC-SSC Securities Co., Ltd.

15th Floor, Aurora Plaza, No. 99 Fucheng Road,
Pudong, Shanghai, People's Republic of China
Tel: (86) 21-6859-8000

Daiwa Securities SMBC Co. Ltd.

Seoul Branch

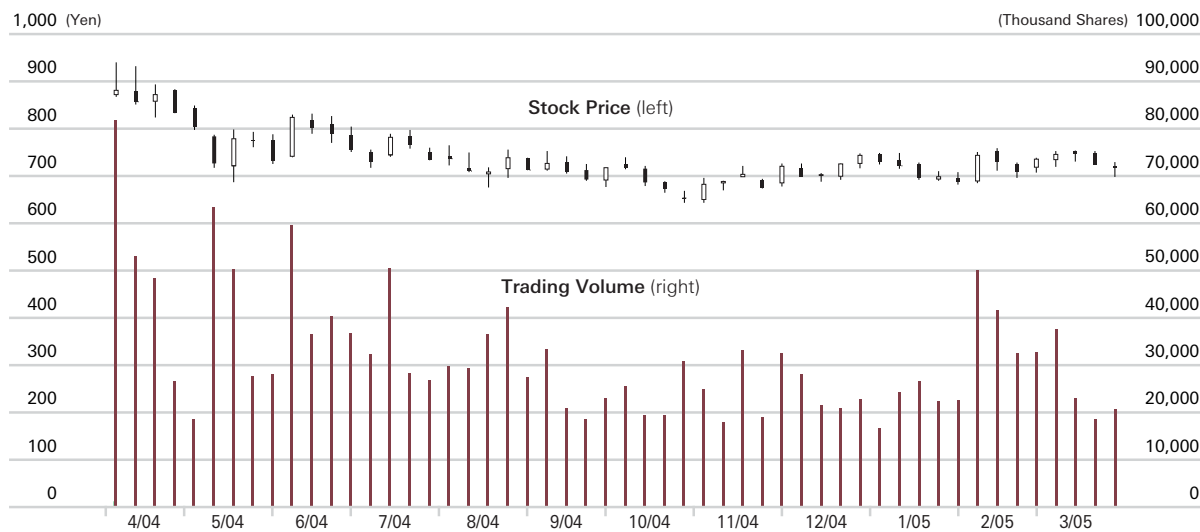
6th Floor, DITC Building, #27-3, Youido-dong,
Yongdungpo-gu, Seoul, Republic of Korea
Tel: (82) 2-787-9100

Beijing Office

International Building 2103, Jianguo Menwai Dajie 19,
Beijing, People's Republic of China
Tel: (86) 10-6500-6688

Other Information: Stock Information

1. Stock Price and Trading Volume



2. Major Shareholders (As of March 31, 2005)

Name	Number of shares held (Thousands)	% of total outstanding shares
Japan Trustee Services Bank, Ltd. Trust Account	107,378	8.06
The Master Trust Bank of Japan, Ltd. Trust Account	74,163	5.57
Sumitomo Mitsui Banking Corporation	30,328	2.28
Taiyo Life Insurance Company	28,140	2.11
The Chase Manhattan Bank 385036	25,341	1.90
Japan Trustee Services Bank, Ltd. The Sumitomo Trust & Banking Retirement Benefit Account	24,888	1.87
Nippon Life Insurance Company	22,759	1.71
State Street Bank and Trust Company 505103	20,317	1.53
BNP PARIBAS Securities (Japan) Limited	16,590	1.25
Daiwa Employees' Stock Ownership	13,473	1.01

* Numbers of shares are rounded down to the closest thousand

3. Breakdown of Shareholders (As of March 31, 2005)

