

Company profile

Business name	Daiwa Securities Group Inc.
Head office	GranTokyo North Tower, 9-1, Marunouchi 1-chome, Chiyoda-ku, Tokyo 100-6751, Japan
Tel	(81) 3-5555 -1111
President and CEO	Takashi Hibino
Commencement of operations	May 1, 1902
Capital	JPY247.3bil (as of March 31, 2011)
Number of employees	15,310 (as of March 31, 2011)
Review of operations	Controls and manages its subsidiaries and affiliated companies engaged in securities related businesses in domestic and overseas by holding their shares
Website	http://www.daiwa-grp.jp/ir/english/



Website
<http://www.daiwa-grp.jp/ir/english/>

Group history

- 1902 Begin Operations as Fujimoto Bill Broker
- 1943 Fujimoto Securities Co. Ltd. merged with Nippon Trust Bank to establish Daiwa Securities Co. Ltd.
- 1998 Conclude final agreement with The Sumitomo Bank Limited on setting up a joint venture company
- 1999 Move to a holding company structure as a first listed company
Establish Daiwa Securities SMBC Co. Ltd., a first joint venture between a major bank and a securities company
Establish Daiwa SB Investments Ltd.
- 2001 Establish Daiwa Securities SMBC Principal Investments Co. Ltd.
- 2004 Transit to a "Committee System" of corporate governance
- 2007 The Daiwa Securities Group to move to new head office, "GranTokyo North Tower"
- 2009 The Daiwa Securities Group and SMFG decided to end the joint venture contract regarding Daiwa Securities SMBC.
- 2010 Due to the dissolution of the wholesale business joint venture with SMFG,
Daiwa Securities SMBC changed its company name to "Daiwa Securities Capital Markets Co. Ltd."
- 2011 Establish Daiwa Next Bank, Ltd.

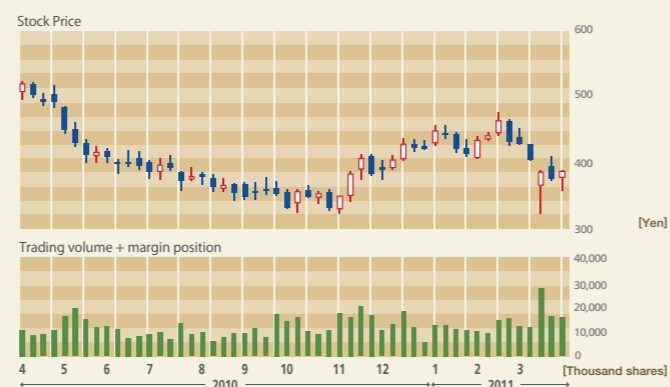
Stock information

Stock Exchange Listings	Tokyo, Osaka, and Nagoya
Trading Unit	1,000 shares
Fiscal Year-end	March 31
Issued and Outstanding shares	1,749,378 thousand shares (as of March 31, 2011)

Stock Price on the TSE (April 1, 2010 – March 31, 2011)

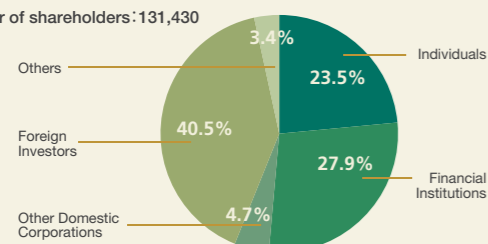
Open	High	Low	Close
¥493	¥520	¥319	¥382
Average daily trading volume			
12,439 thousand shares			

Stock Price and Trading Volume

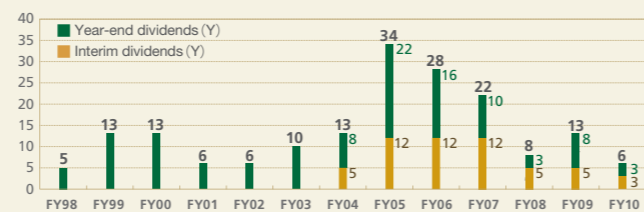


Stock ownership (as of March 31, 2011)

Number of shareholders: 131,430



Dividend per share

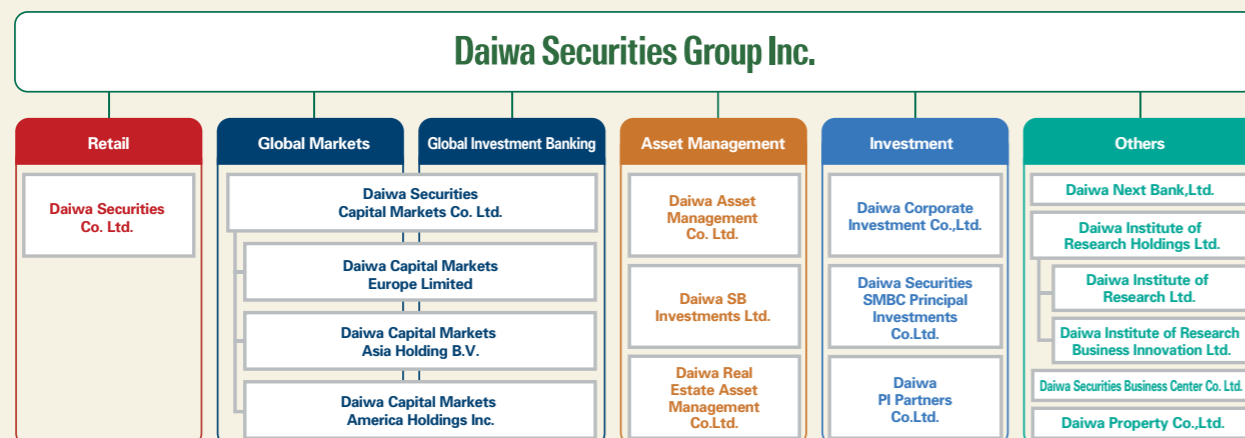


* Interim dividend system was adopted in FY04.

FACT SHEET

Daiwa Securities Group FACT SHEET
(April 1, 2010~March 31, 2011)

1 Business Structure (As of June 1, 2011)



2 Major Group Companies and Operations

Retail		Wholesale	
Daiwa Securities	Daiwa Securities mainly serves individual investors and unlisted companies, offering consulting and online trading, and handling a complete spectrum of financial products and services.	Daiwa Securities Capital Markets	Daiwa Securities Capital Markets is a market pioneer in providing brokerage, investment banking and M&A advisory services, addressing a multitude of needs from corporate and institutional clients both in Japan and overseas.
Asset Management		Investment	
Daiwa Asset Management	Daiwa Asset Management creates and manages investment trusts that encompass a broad assortment of investment targets.	Daiwa Corporate Investment	Daiwa Corporate Investment focuses largely on venture capital investments, and organizing and managing private equity funds.
Daiwa SB Investments	Daiwa SB Investments offers pension fund management and other asset management services to both domestic and overseas institutional investors.	Daiwa Securities SMBC Principal Investments	Daiwa Securities SMBC Principal Investments manages private equity portfolio.
		Daiwa PI Partners	Daiwa PI Partners conducts direct investments in monetary claims and manages private equity fund.
Others			
Daiwa Next Bank	Daiwa Next Bank is the internet bank established by Daiwa Securities Group in April 2011.	Daiwa Institute of Research Group	Daiwa Institute of Research Group serves as a comprehensive think tank and research center both for the Group and clients outside the Group. Operations are research provisions and system development.

3 Financial Summary (Consolidated)

(Y mil)	FY2010	FY2009	% Change vs FY09	FY2010			
				4Q	3Q	2Q	1Q
Operating revenues	403,042	537,915	-25.1%	83,438	118,214	107,236	94,151
Net operating revenues	318,564	458,105	-30.5%	61,998	96,517	88,434	71,613
SG&A	363,919	362,844	0.3%	94,697	92,381	88,980	87,859
Ordinary income	-32,602	102,917	-	-30,591	7,017	-839	-8,187
Net income	-37,331	43,429	-	-33,129	1,182	-4,192	-1,191
Total assets	16,842,411	17,155,345		16,842,411	16,867,587	16,594,420	16,209,379
Net assets	921,398	1,017,528		921,398	927,158	934,776	961,298
Shareholders' equity*	833,932	927,163		833,932	843,159	856,224	875,996
EPS (Y)	-21.90	26.41		-19.74	0.70	-2.45	-0.68
BPS (Y)	496.76	530.27		496.76	502.68	500.95	506.75

*Shareholders' equity = owners' equity + accumulated other comprehensive income

Consolidated Capital Adequacy Ratio	27.2%
Tier 1 Capital Ratio	24.4%

Consolidated Capital Adequacy Ratio hereunder is calculated under the principal of Financial Service Agency Public Notice 130 of the Financial Instruments and the Exchange Act (Article 57-17-1).

(As of March 31, 2011)

4 Segment Information

(Y mil)	Net operating revenues							Ordinary income						
	FY2010	FY2009	% Change vs FY09	FY2010				FY2010	FY2009	% Change vs FY09	FY2010			
				4Q	3Q	2Q	1Q				4Q	3Q	2Q	1Q
Retail ⁽¹⁾	178,970	193,820	-7.7%	45,798	45,416	41,695	46,059	41,866	40,475	3.4%	12,951	10,010	7,367	11,536
Global Markets ⁽²⁾	61,495	82,748	-25.7%	9,535	20,529	24,371	7,059	-52,173	-14,126	-	-21,555	-8,847	-2,474	-19,295
Global Investment Banking ⁽³⁾	30,635	56,064	-45.4%	8,564	7,637	7,207	7,225	-14,733	9,274	-	-4,032	-3,465	-3,689	-3,545
Asset Management ⁽⁴⁾	36,324	31,492	15.3%	9,151	9,177	8,945	9,049	15,948	11,196	42.4%	3,903	4,453	3,853	3,738
Investment ⁽⁵⁾	-15,277	73,991	-	-19,945	8,331	-2,977	-687	-21,476	66,243	-	-20,856	6,754	-4,716	-2,658
Others ⁽⁶⁾	19,393	33,900	-42.8%	4,832	4,397	7,300	2,863	-8,140	-7,336	-	-1,925	-2,804	-2,964	-446
Total before adjustment	311,541	472,017	-34.0%	57,937	95,490	86,543	71,569	-38,708	105,727	-	-31,514	6,100	-2,624	-10,669
Adjustment	7,023	-13,911	-	4,060	1,027	1,891	43	6,106	-2,809	-	922	916	1,784	2,482
Consolidated total	318,564	458,105	-30.5%	61,998	96,517	88,434	71,613	-32,602	102,917	-	-30,591	7,017	-839	-8,187

■Main companies for each segment are as follows:

(1) Daiwa Securities, Hinode Securities (2) Daiwa Securities Capital Markets (Global Markets Division) (3) Daiwa Securities Capital Markets (Global Investment Banking Division), Daiwa Corporate Advisory Partners, Sagent Advisors Inc. (4) Daiwa Asset Management, Daiwa SB Investments, Daiwa Real Estate Asset Management, Daiwa Fund Consulting (5) Daiwa PI Partners, Daiwa Securities SMBCPI, Daiwa Corporate Investment (6) Daiwa Securities Group Inc., Daiwa Securities Capital Markets (Financial Division and others), Daiwa Institute of Research HD, Daiwa Institute of Research, Daiwa Institute of Research Business Innovation, Daiwa Securities Business Center, Daiwa Property, Daiwa Sanko

*Equity in earnings of affiliates is included in ordinary income.

5 Operating Revenues by Business Sector (Consolidated)

(Y mil)	FY2010	FY2009	% Change vs FY09	FY2010			
				4Q	3Q	2Q	1Q
Total commission	218,630	252,863	-13.5%	58,763	54,618	49,142	56,106
Equity	50,254	56,387	-10.9%	14,893	12,280	9,593	13,487
Fixed income	827	698	18.5%	299	179	162	186
Investment trust	116,734	108,266	7.8%	28,660	29,564	28,238	30,272
Investment banking	38,704	70,647	-45.2%	11,840	9,960	8,109	8,794
Others	12,108	16,863	-28.2%	3,069	2,634	3,038	3,366
Net gain/loss on trading	92,476	110,955	-16.7%	15,985	31,605	34,160	10,724
Equity	-8,797	24,481	-	11,700	6,154	-11,337	-15,315
Bond and Forex	101,273	86,474	17.1%	4,285	25,451	45,498	26,039
Net gain/loss on private equity and other securities	-17,259	75,584	-	-20,154	8,136	-3,316	-1,924
Net financial income	13,854	7,070	96.0%	4,161	1,212	4,957	3,522

6 Ordinary Income of Domestic Group Companies & Overseas Operation

Domestic Group Companies

(Y mil)	FY2010	FY2009	% Change vs FY09	FY2010			
				4Q	3Q	2Q	1Q
Daiwa Asset Management	13,741	9,929	38.4%	3,287	3,896	3,309	3,247
DIR Group*	8,339	7,901	5.5%	2,196	2,300	1,635	2,206
Daiwa Corporate Investment	-2,489	-6,952	-	-1,425	933	-785	-1,212
Other Domestic Group Companies	1,590	2,789	-43.0%	136	169	691	592
Total**	21,180	13,668	55.0%	4,196	7,298	4,850	4,835

Daiwa SB Investments	4,918	3,189	54.2%	1,550	1,413	1,030	923
----------------------	-------	-------	-------	-------	-------	-------	-----

Overseas

America	-1,447	1,707	-	-501	-754	-131	-59
Europe	-8,954	1,984	-	-3,557	-2,745	-1,016	-1,635
Asia/Oceania	-11,133	60	-	-4,017	-3,316	-2,698	-1,100
Total	-21,536	3,752	-	-8,076	-6,816	-3,846	-2,796

*DIR Group includes Daiwa Institute of Research Holdings, Daiwa Institute of Research, and Daiwa Institute of Research Business Innovation. (Excluding in-group transactions and dividend from subsidiaries)

**Total figure of domestic consolidated Group companies except Daiwa Securities, Daiwa Capital Markets, Daiwa SMBC-PI and Daiwa PI Partners.