

## Company profile

Business name	Daiwa Securities Group Inc.
Head office	GranTokyo North Tower, 9-1, Marunouchi 1-chome, Chiyoda-ku, Tokyo 100-6751, Japan
Tel	(81) 3-5555 -1111
President and CEO	Shigeharu Suzuki
Commencement of operations	May 1, 1902
Common stock	JPY247.3bil (as of March 31, 2010)
Number of group employees	15,750 (as of March 31, 2010)
Review of operations	Controls and manages its subsidiaries and affiliated companies engaged in securities related businesses in domestic and overseas by holding their shares
Website	<a href="http://www.daiwa-grp.jp/ir/english/">http://www.daiwa-grp.jp/ir/english/</a>



Website  
<http://www.daiwa-grp.jp/ir/english/>

## Group history

- 1902 Begin Operations as Fujimoto Bill Broker
- 1943 Fujimoto Securities Co. Ltd. merged with Nippon Trust Bank to establish Daiwa Securities Co. Ltd.
- 1998 Conclude final agreement with The Sumitomo Bank Limited on setting up a joint venture company
- 1999 Move to a holding company structure as a first listed company  
 Establish Daiwa Securities SMBC Co. Ltd., a first joint venture between a major bank and a securities company  
 Establish Daiwa SB Investments Ltd.
- 2001 Establish Daiwa Securities SMBC Principal Investments Co. Ltd.
- 2004 Transit to a "Committee System" of corporate governance
- 2007 The Daiwa Securities Group to move to new head office, "GranTokyo North Tower"
- 2009 The Daiwa Securities Group and SMFG decided to end the joint venture contract regarding Daiwa Securities SMBC.
- 2010 Due to the dissolution of the wholesale business joint venture with SMFG,  
 Daiwa Securities SMBC changed its company name to "Daiwa Securities Capital Markets Co. Ltd."

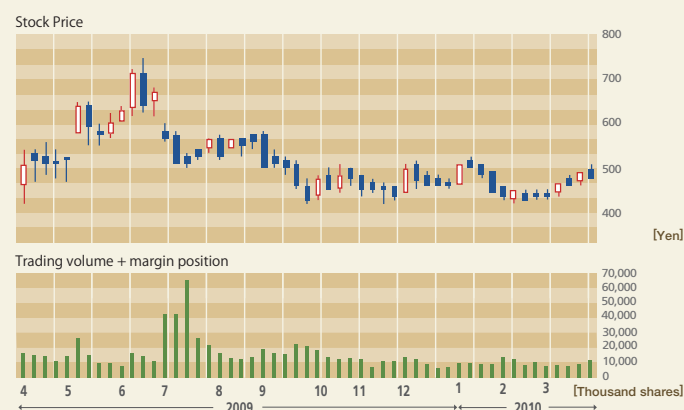
## Stock information

Stock Exchange Listings	Tokyo, Osaka, and Nagoya
Trading Unit	1,000 shares
Fiscal Year-end	March 31
Issued and Outstanding shares	1,749,358 thousand shares (as of March 31, 2010)

### Stock Price on the TSE (April 1, 2009 – March 31, 2010)

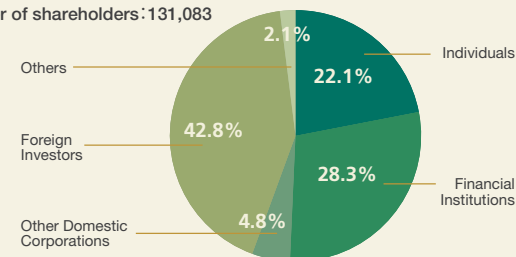
Open	High	Low	Close
¥448	¥741	¥422	¥492
Average daily trading volume			
14,672 thousand shares			

### Stock Price and Trading Volume

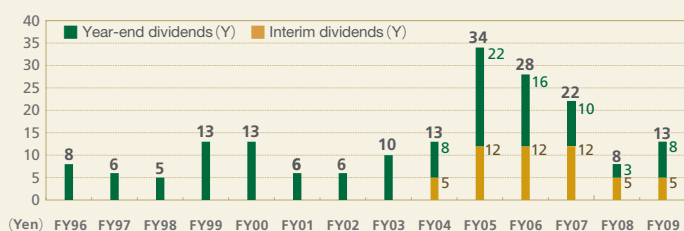


## Stock ownership (as of March 31, 2010)

Number of shareholders: 131,083



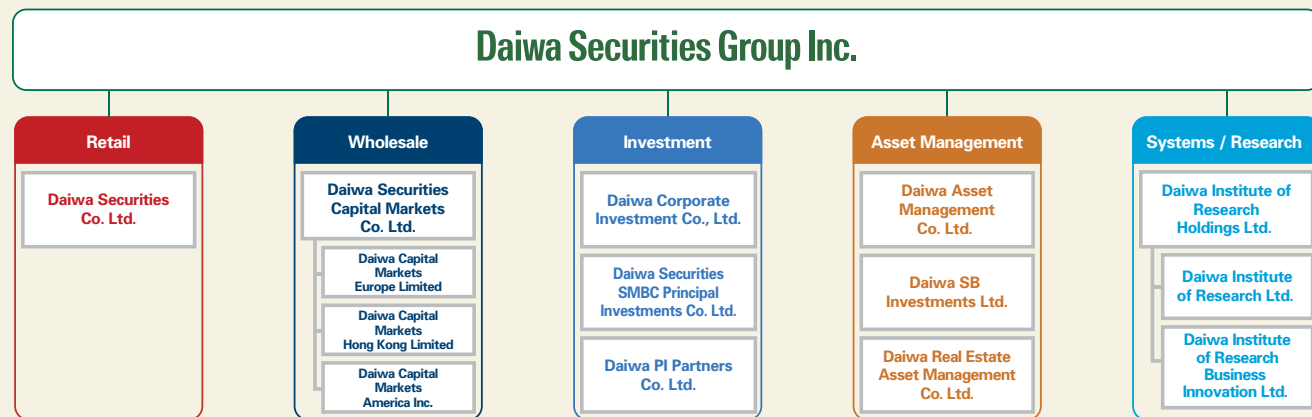
## Dividend per share



\* Interim dividend system was adopted in FY04

**FACT SHEET**  
 Daiwa Securities Group FACT SHEET  
 April 1, 2009 - March 31, 2010

# 1 Business Structure (As of July 1, 2010)



# 2 Major Group Companies and Operations

	Retail	Wholesale
<b>Daiwa Securities</b>	Daiwa Securities mainly serves individual investors and unlisted companies, offering consulting and online trading, and handling a complete spectrum of financial products and services.	<b>Daiwa Securities Capital Markets</b> Daiwa Securities Capital Markets is a market pioneer in providing brokerage, investment banking and M&A advisory services, addressing a multitude of needs from corporate and institutional clients both in Japan and overseas.
<b>Daiwa Asset Management</b>	<b>Asset management</b> Daiwa Asset Management creates and manages investment trusts that encompass a broad assortment of investment targets.	<b>Investment</b> Daiwa PI Partners conducts direct investments in monetary claims and manages private equity fund.
<b>Daiwa SB Investments</b>	Daiwa SB Investments offers pension fund management and other asset management services to both domestic and overseas institutional investors.	Daiwa Securities SMBC Principal Investments manages private equity portfolio. Daiwa Corporate Investment focuses largely on venture capital investments, and organizing and managing private equity funds.
<b>Daiwa Institute of Research Group</b>	<b>Group support</b> Daiwa Institute of Research Group serves as a comprehensive think tank and research center both for the Group and clients outside the Group. Operations are research provisions and system development.	
	<b>Daiwa Securities Business Center</b> Daiwa Securities Business Center is a comprehensive outsourcing vendor and provider of back office services for the securities business.	<b>Daiwa Property</b> Daiwa Property handles the property management activities for branch offices, corporate dormitories and other buildings used by the Group.

# 3 Financial Summary (Consolidated)

(Y mil)	FY2009	FY2008	% Change vs FY08	FY2009			
				4Q	3Q	2Q	1Q
Operating revenues	537,915	413,936	30.0%	116,549	183,615	105,631	132,119
Net operating revenues	458,105	199,544	129.6%	98,094	165,509	87,137	107,364
SG&A	362,844	343,270	5.7%	90,946	99,775	85,569	86,552
Ordinary income	102,917	-141,150	-	10,160	67,891	2,037	22,827
Net income	43,429	-85,039	-	-2,798	26,366	1,991	17,870
Total assets	17,155,345	14,182,579		17,155,345	14,873,191	16,129,373	15,309,320
Net assets	1,017,528	952,329		1,017,528	938,405	1,249,909	1,107,811
Shareholders' equity*	927,163	720,272		927,163	925,983	988,324	824,109
EPS (Y)	26.41	-63.16		-1.60	15.08	1.15	13.27
BPS (Y)	530.27	534.99		530.27	529.60	565.26	612.12
ROE (Annualized)	5.3%	-		-	11.0%	0.9%	9.3%

\*Shareholders' equity = owners' equity + valuation and translation adjustments

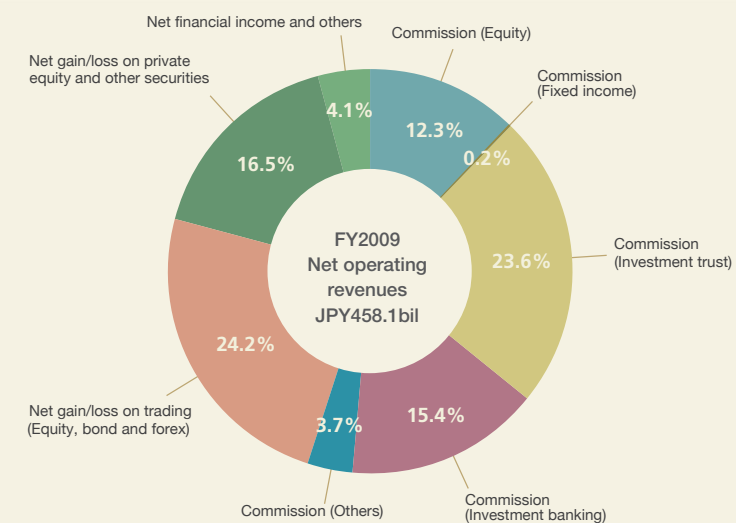
ROE (Annualized)	FY09
Daiwa Securities	9.5%
Daiwa Capital Markets (consolidated)	9.9%

FY09 Dividend
FY09 Proposed Dividend per Share : 13 yen (including 5 yen interim dividend)

# 4 Operating Revenues by Business Sector (Consolidated)

(Y mil)	FY2009	FY2008	% Change vs FY08	FY2009			
				4Q	3Q	2Q	1Q
Total commission	252,863	208,880	21.1%	57,083	67,256	58,008	70,514
Equity	56,387	56,401	-0.0%	13,681	12,713	14,524	15,467
Fixed income	698	991	-29.6%	183	186	167	160
Investment trust	108,266	97,001	11.6%	27,558	29,462	27,123	24,120
Investment banking	70,647	34,914	102.3%	11,715	20,433	11,886	26,612
Others	16,863	19,571	-13.8%	3,943	4,459	4,306	4,153
Net gain/loss on trading	110,955	40,921	171.1%	39,951	7,754	28,536	34,712
Equity	24,481	-25,737	-	6,922	688	2,184	14,685
Bond and Forex	86,474	66,658	29.7%	33,029	7,066	26,351	20,026
Net gain/loss on private equity and other securities	75,584	-79,477	-	-4,917	86,532	-4,463	-1,567
Net financial income	7,070	16,629	-57.5%	1,948	1,362	2,451	1,307

# 5 Revenue Structure of Daiwa Securities Group



# 6 Domestic Group Companies & Overseas Operation

(Y mil)	FY2009	FY2008	% Change vs FY08	FY2009			
				4Q	3Q	2Q	1Q
<b>Daiwa Asset Management</b>	9,929	11,613	-14.5%	2,766	2,301	2,673	2,187
<b>DIR Group*</b>	7,901	9,140	-13.6%	3,448	1,059	2,027	1,365
<b>Daiwa SMBC Capital**</b>	-6,952	-5,895	-	-1,727	-932	-1,320	-2,971
<b>Other Domestic Group Companies</b>	2,789	-2,969	-	965	586	695	542
<b>Total***</b>	13,668	11,889	15.0%	5,453	3,015	4,075	1,124

Daiwa SB Investments	3,189	2,984	6.9%	1,417	819	558	393
----------------------	-------	-------	------	-------	-----	-----	-----

Overseas	FY2009	FY2008	% Change vs FY08	4Q	3Q	2Q	1Q
America	1,707	4,806	-64.5%	-833	-140	250	2,430
Europe	1,984	-4,898	-	-1,560	-349	1,020	2,874
Asia/Oceania	60	-1,553	-	-485	-229	199	576
<b>Total</b>	3,752	-1,645	-	-2,879	-720	1,470	5,881

\*DIR Group includes Daiwa Institute of Research Holdings, Daiwa Institute of Research, and Daiwa Institute of Research Business Innovation. (Excluding in-group transactions and dividend from subsidiaries)

\*\*Daiwa SMBC Capital changed its name to Daiwa Corporate Investment.

\*\*\*Total figure of domestic consolidated Group companies except Daiwa Securities, Daiwa Capital Markets, Daiwa SMBC-PI and Daiwa PI Partners.