

The Daiwa Securities Group is composed of Daiwa Securities Group Inc., the holding company controlling the group companies, and two securities companies, Daiwa Securities Co. Ltd. and Daiwa Securities Capital Markets Co. Ltd. along with various other companies providing securities-related services in order to offer a comprehensive range of investment and financial services.

## Four Core Operations

### 1. Retail Securities Business

Through its domestic network of 119 branches (as of April 2010), a call center, and the Internet, Daiwa Securities offers two retail services, Daiwa Consulting and Daiwa Direct, which provide a wide range of financial products and services as well as support for customer asset management, mainly for individuals and unlisted companies. (Principal company: Daiwa Securities)

### 2. Wholesale Securities Business

Daiwa Securities Capital Markets provides sales and brokerage services, as well as investment banking services, to institutional investors, corporate clients, financial institutions and public organizations in and outside of Japan.

Sales and brokerage services: brokerage and trading of equities, bonds, derivatives, and other financial products, mainly for institutional investors.

Investment banking services: support for corporate operations ranging from business expansion to finance and capital strategies, by assisting the financing activities of corporate clients, financial institutions and public organizations.

(Principal company: Daiwa Securities Capital Markets)

### 3. Asset Management Business

The Group creates and manages stock, bond, and private investment trusts, and provides other investment management services for real estate investment trusts, pensions, and other funds.

(Principal companies: Daiwa Asset Management, Daiwa SB Investments, Daiwa Real Estate Asset Management)

### 4. Investment Business

Using its own funds or through the formation of investment funds, the Daiwa Securities Group invests in areas such as private equity, venture capital opportunities, business regeneration, monetary receivables, and real estate.

(Principal companies: Daiwa Corporate Investment, Daiwa Securities SMBC Principal Investments, and Daiwa PI Partners).

## Group Support Operations

### 5. Research, Consulting, and Systems Business

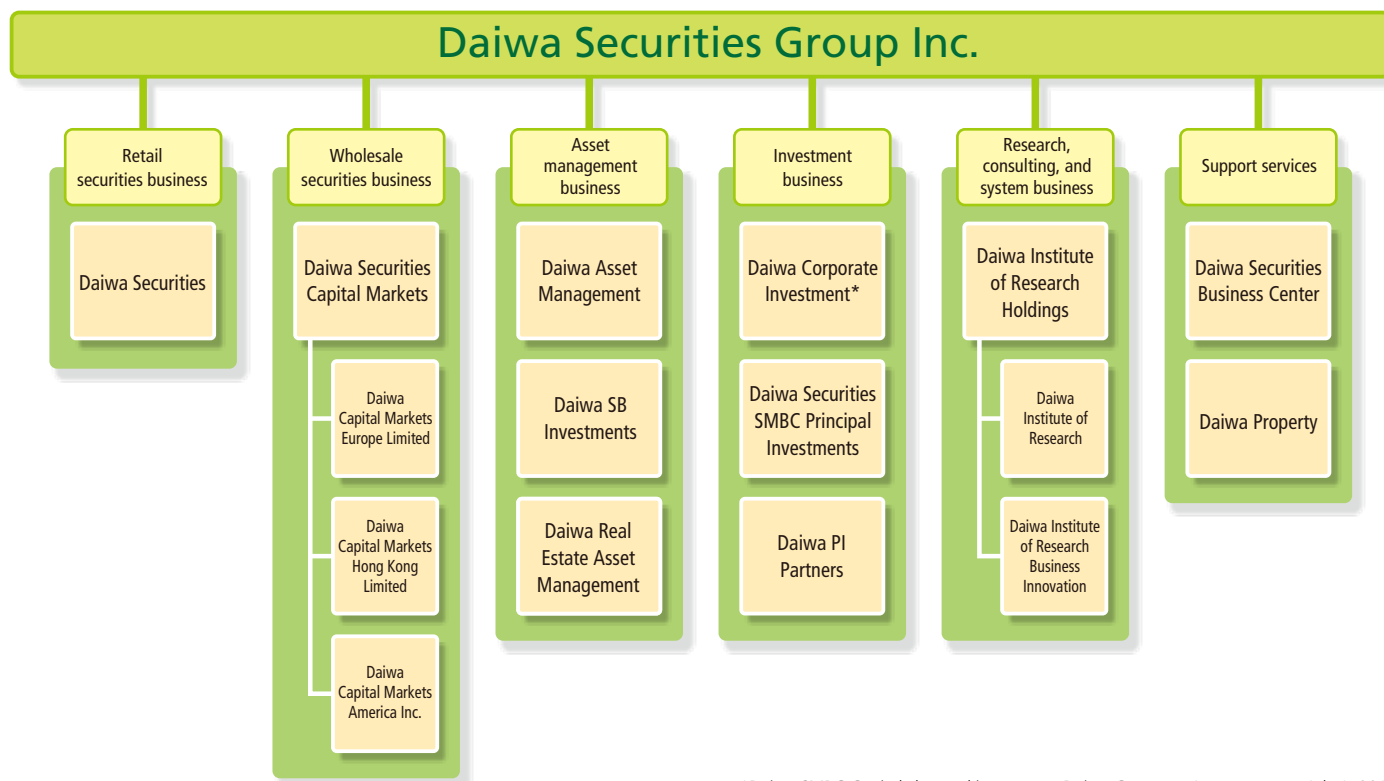
The Group provides information via research reports and other documents, management consulting, IT services, and other offerings to institutional investors, corporate clients, financial institutions, and public organizations in Japan and overseas.

(Principal companies: Daiwa Institute of Research, Daiwa Institute of Research Business Innovation)

### 6. Support Services

The Group provides services in such areas as securities-related administrative outsourcing and real estate consulting.

(Principal companies: Daiwa Securities Business Center and Daiwa Property)



\*Daiwa SMBC Capital changed its name to Daiwa Corporate Investment on July 1, 2010.